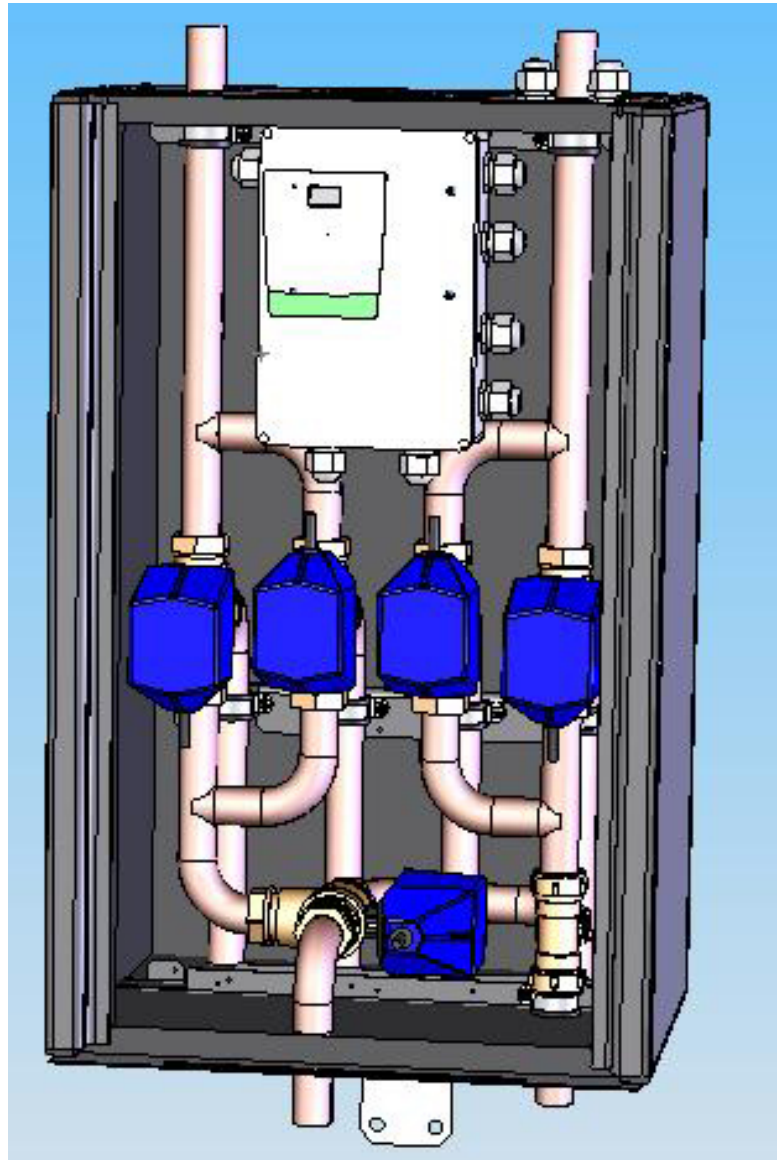


# EcoCool



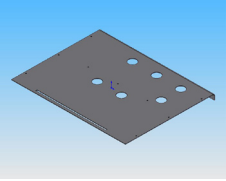
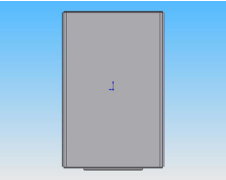
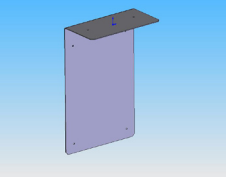
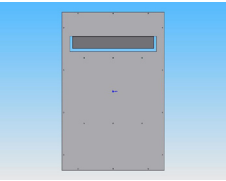
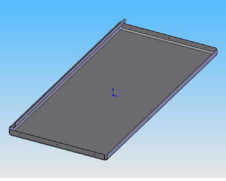
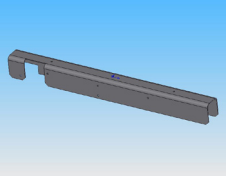
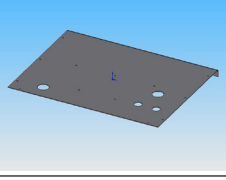
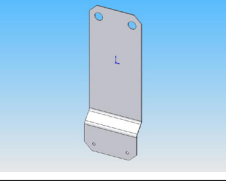
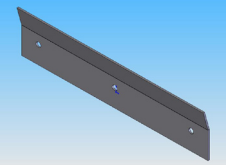
**INNEHÅLLSFÖRTECKNING**  
**INHALTSVERZEICHNIS**

**TABLE OF CONTENTS**  
**TABLE DES MATIERES**

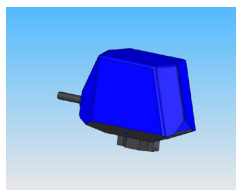
---

---

1.	EXTERIÖR	EXTERIOR
	EXTERIEUR	EXTERIEUR
2.	EL DETALJER	ELECTRIC COMPONENTS
	EL KOMPONENTEN	COMPOSANTS ÉLECTRIQUES
3.	KYLKOMPONENTER	REFRIGERATING COMPONENTS
	KÄLTETEILE	COMPOSANTS FRIGORIFIQUES
4.	ÖVRIGT	SUNDRIES
	VERSCHIEDENES	DIVERS
5.	TILLBEHÖR	ACCESSORIES
	ZUBEHÖR	ACCESSOIRES

	Plåt, botten	Plate, bottom	Blech, untere	Tôle du fond	<b>581 650 345</b>
	Plåt, front	Plate, front	Blech, Front	Tôle, front	<b>581 651 345</b>
	Plåt, el låda	Plate, electric box	Blech, Elektrobox	Tôle, boîte électrique	<b>581 652 345</b>
	Plåt, bakre	Plate, back	Blech, hintere	Tôle, arrière	<b>581 653 345</b>
	Plåt, sida	Plate, side	Blech, Seite	Tôle, côté	<b>581 654 345</b>
	Plåt, rörfäste	Plate, pipe holder	Blech, Rohrhalter	Tôle, fixation de tuyau	<b>581 655 345</b>
	Plåt, tak	Plate, top	Blech, Dach	Tôle, toit	<b>581 656 345</b>
	Plåt, tippskydd	Plate, tilt protection	Blech, Kippschutz	Tôle, protection basculer	<b>581 657 345</b>
	Plåt, väggfäste	Plate, wall bracket	Blech, Wandbefestigung	Tôle, fixation au mur	<b>581 658 345</b>

	Elskåp kpl	Electric cabinet complete	Elektrokasten komplett	Bôte électrique complète	<b>581 670 301</b>
	Kretskort, huvudkort	Printed circuit board, master card	Leiterplatte, Grund	Carte équipée, principal	<b>582 037 401</b>
	Plint ST 2,5	Terminal block ST 2,5	Klemmbrett ST 2,5	Plaque á bornes ST 2,5	<b>913 145 401</b>
	Plint ST 2,5 TWIN grå blå (BU) gul/grön (PE)	Terminal block ST 2,5 TWIN grey blue (BU) yellow/green (PE)	Klemmbrett ST 2,5 TWIN grau blau (BU) gelb/grün (PE)	Plaque á bornes ST 2,5 TWIN gris bleu (BU) jaune/vert (PE)	<b>913 146 401</b> <b>913 146 402</b> <b>913 146 403</b>
	Returgivare	Sensor, return pipe	Fühler, Rückleitung	Capteur, conduit de retour	<b>912 869 002</b>
	Adapterkablage	Adapter cable kit	Adapterkabelkit	Câblage d'adaptateur	<b>582 017 401</b>
	Kabelgenomföring M20	Cable inlet M20	Kabeldurchführung M20	Douille de passage câble M20	<b>581 769 401</b>
	Mutter, kabelgenomföring M20	Nut, cable inlet M20	Mutter, Kabeldurchführung M20	Ecrou, douille de passage câble M20	<b>581 771 401</b>



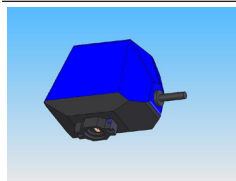
Shuntmotor

Mixing valve motor

Mischermotor

Moteur de mélange

**581 762 401**



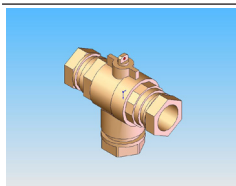
Motor, växlande

Motor, alternating

Motor, Wechselnder

Moteur, changeant

**581 763 401**



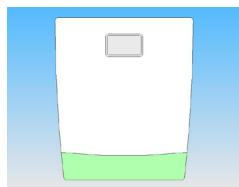
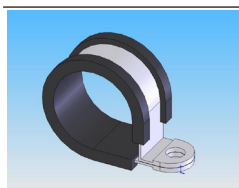
Kulventil  
3-vägs

Ball valve  
three way

Kugelventil,  
dreiwege

Clapet à bille  
à 3 voies

**581 764 401**

Dekal,  
el lådaSticker,  
electric cabinetAufkleber,  
ElektrocastenAutocollant de  
boîte électrique**581 779 301**Emblem  
CTCEmblem  
CTCEmblem  
CTCEmblème  
CTC**580 338 401**

Rörklammer

Tube clamp

Rohrklammer

Crochet de fixation

**581 765 401**